

Table of the polygon coordinates (GGRS '87)
Surface area = 206.002,67 sq.m.
Perimeter = 6.679,67 m.

α/α	X	Y
K1	657899.972	4573900.365
K2	657881.734	4573973.291
K3	658297.285	4574042.176
K4	658607.510	4574056.749
K5	658916.537	4574138.676
K6	659231.611	4574142.734
K7	659549.308	4574236.551
K8	659840.076	4574005.214
K9	659811.536	4573964.328
K10	659534.111	4574171.633
K11	659299.534	4574091.667
K12	659554.071	4573561.453
K13	659619.094	4573228.770
K14	659709.947	4572909.272
K15	659668.798	4572899.628
K16	659579.714	4573212.463
K17	659501.166	4573555.620
K18	659220.400	4574057.199
K19	658911.485	4574072.040
K20	658606.929	4573994.317
K21	658279.857	4573965.943
K1	657899.972	4573900.365

Table of coordinates of W/T
(Projection System GGRS '87)

α/α	X	Y	Z
A/Γ1	658288.23	4574015.76	1035.60
A/Γ2	658609.46	4574029.52	1021.90
A/Γ3	658918.39	4574112.95	1010.60
A/Γ4	659239.95	4574104.51	1044.60
A/Γ5	659396.47	4573825.40	994.90
A/Γ6	659534.14	4573527.25	959.60
A/Γ7	659600.17	4573216.97	926.50
A/Γ8	659682.20	4572911.58	852.10
A/Γ9	659542.35	4574199.91	984.60
A/Γ10	659798.01	4573995.11	962.80

Table of coordinates of W/T
(Projection System WGS '84)

α/α	φ	λ
A/Γ1	41° 18' 16.6291"	25° 53' 33.2135"
A/Γ2	41° 18' 16.8478"	25° 53' 47.0330"
A/Γ3	41° 18' 19.3329"	25° 54' 00.3893"
A/Γ4	41° 18' 18.8308"	25° 54' 14.2024"
A/Γ5	41° 18' 09.6736"	25° 54' 20.6661"
A/Γ6	41° 17' 59.9126"	25° 54' 26.3013"
A/Γ7	41° 17' 49.8095"	25° 54' 28.8459"
A/Γ8	41° 17' 39.8534"	25° 54' 32.0825"
A/Γ9	41° 18' 21.7075"	25° 54' 27.2898"
A/Γ10	41° 18' 14.8878"	25° 54' 38.0841"

⊗
A/Γ

—

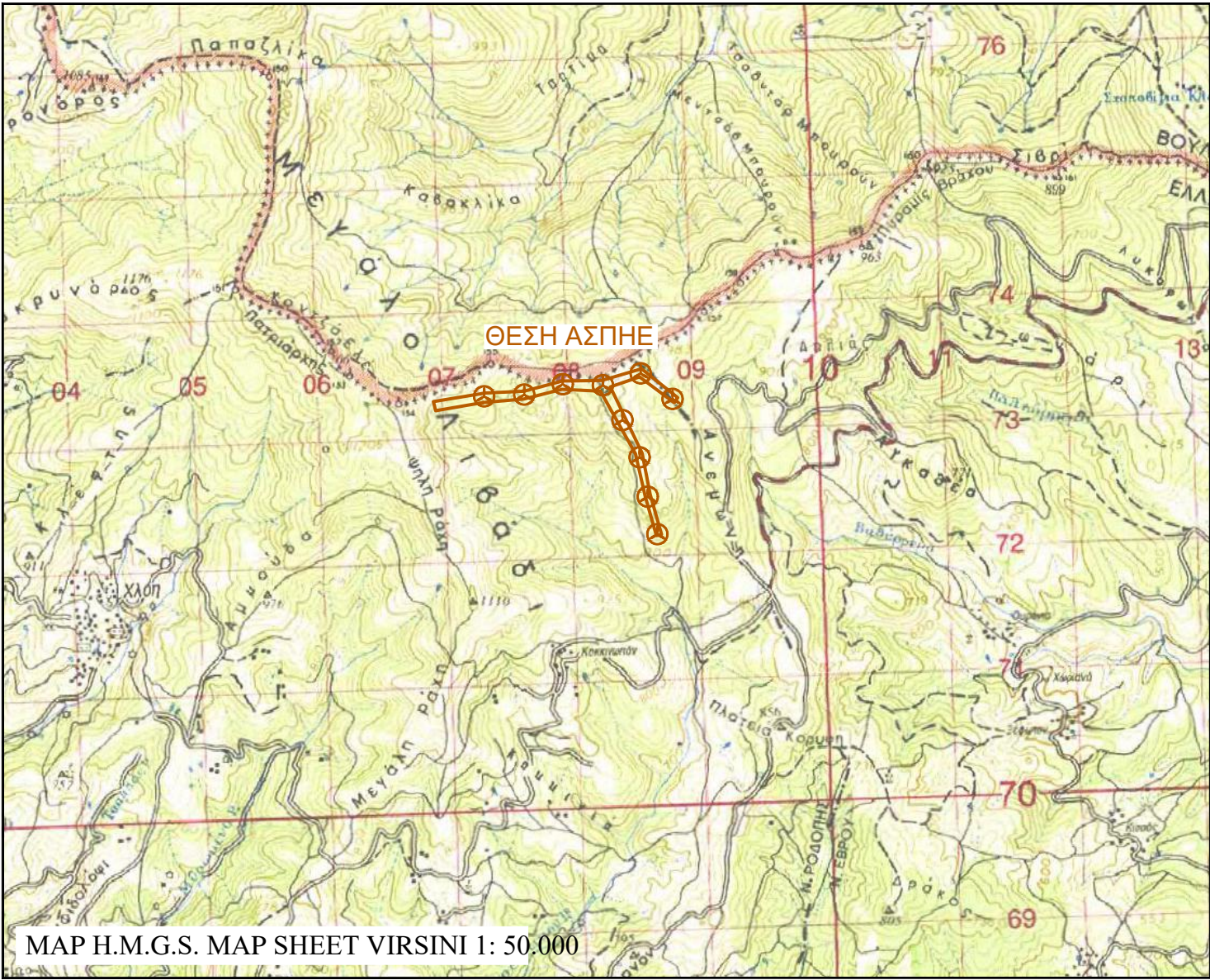
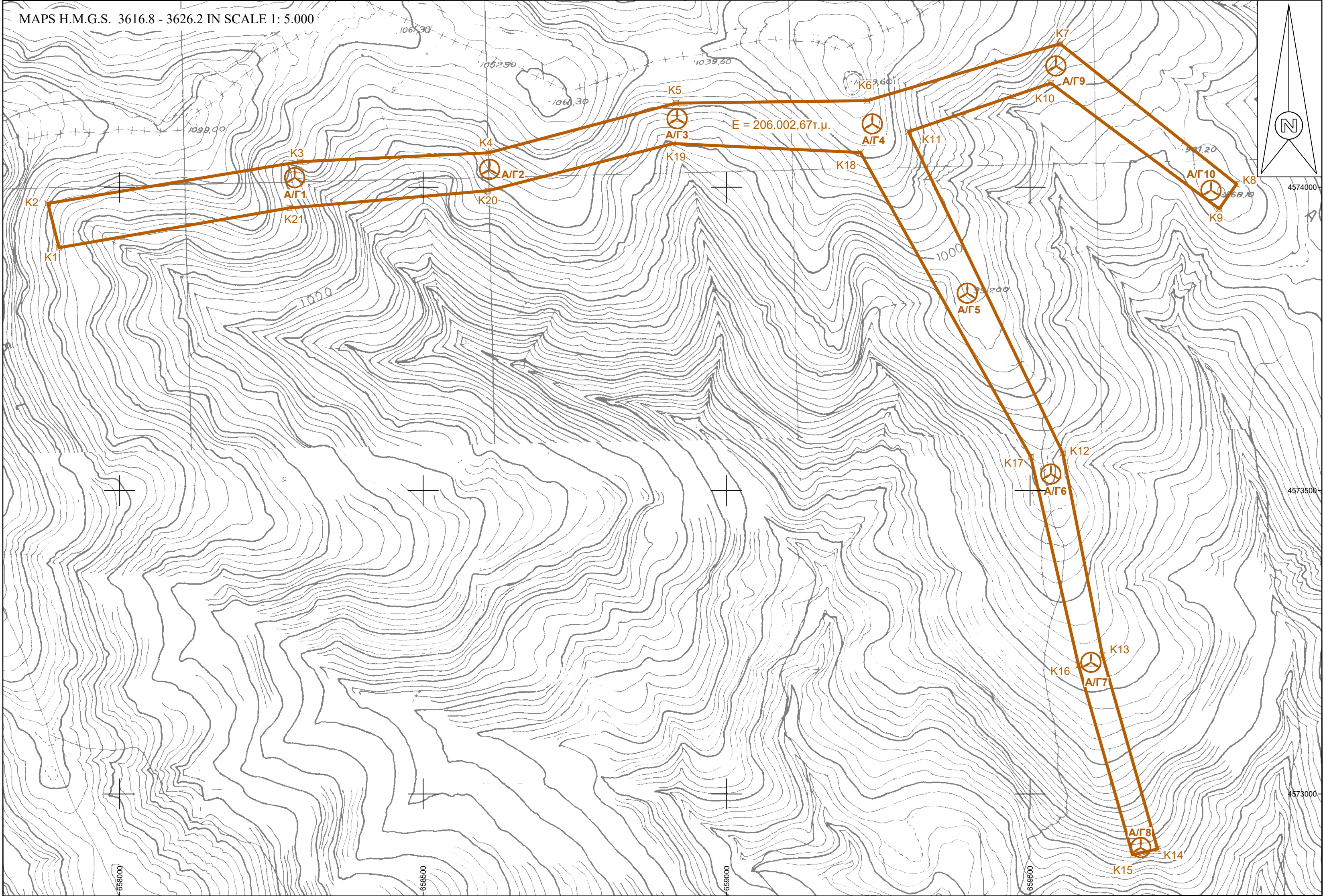
⊗
K1

LEGEND

WIND TURBINE LOCATION

WPP POLYGON

POLYGON VERTICES



DEVELOPER	
AETOS WIND SINGLE MEMBER P.C.	
PROJECT TITLE	
WIND POWER PLANT WITH A POWER OF 34.5 MW	
LOCATION	
M.C. KECHROS, MUNICIPALITY OF ARRIANA & M.C. ORFEAS, MUNICIPALITY OF SOUFLI, REGIONAL UNITS OF RODOPI & EVROS SITE - "ANEMONI"	
ISSUE TITLE	DESIGN NO. :
TOPOGRAPHIC MAP	T1
SCALE :	DATE OF ISSUE:
1:5.000	JULY 2024
RESEARCHER	CHECK